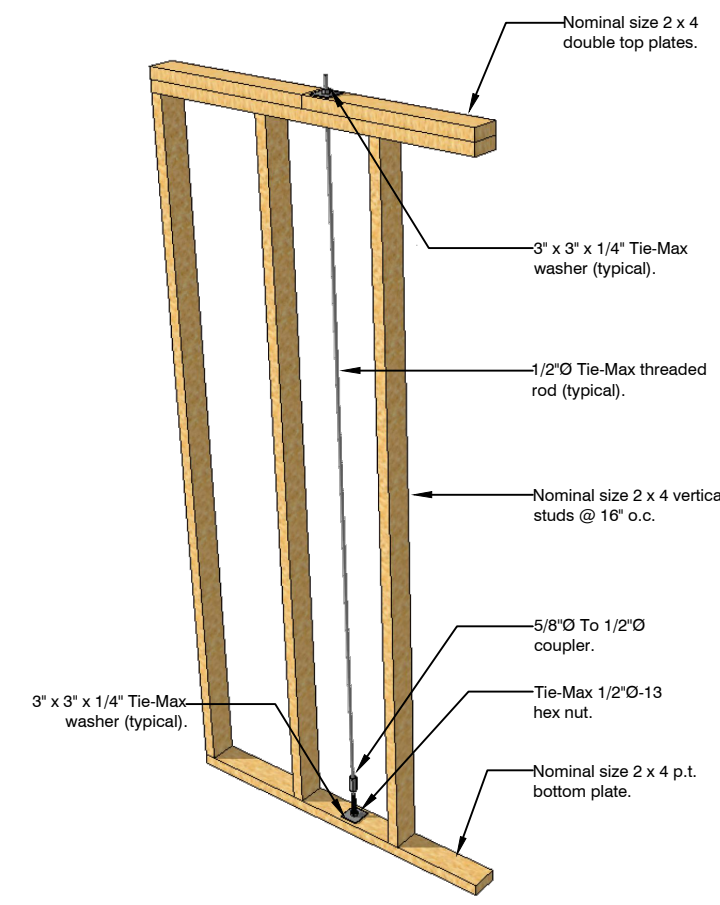
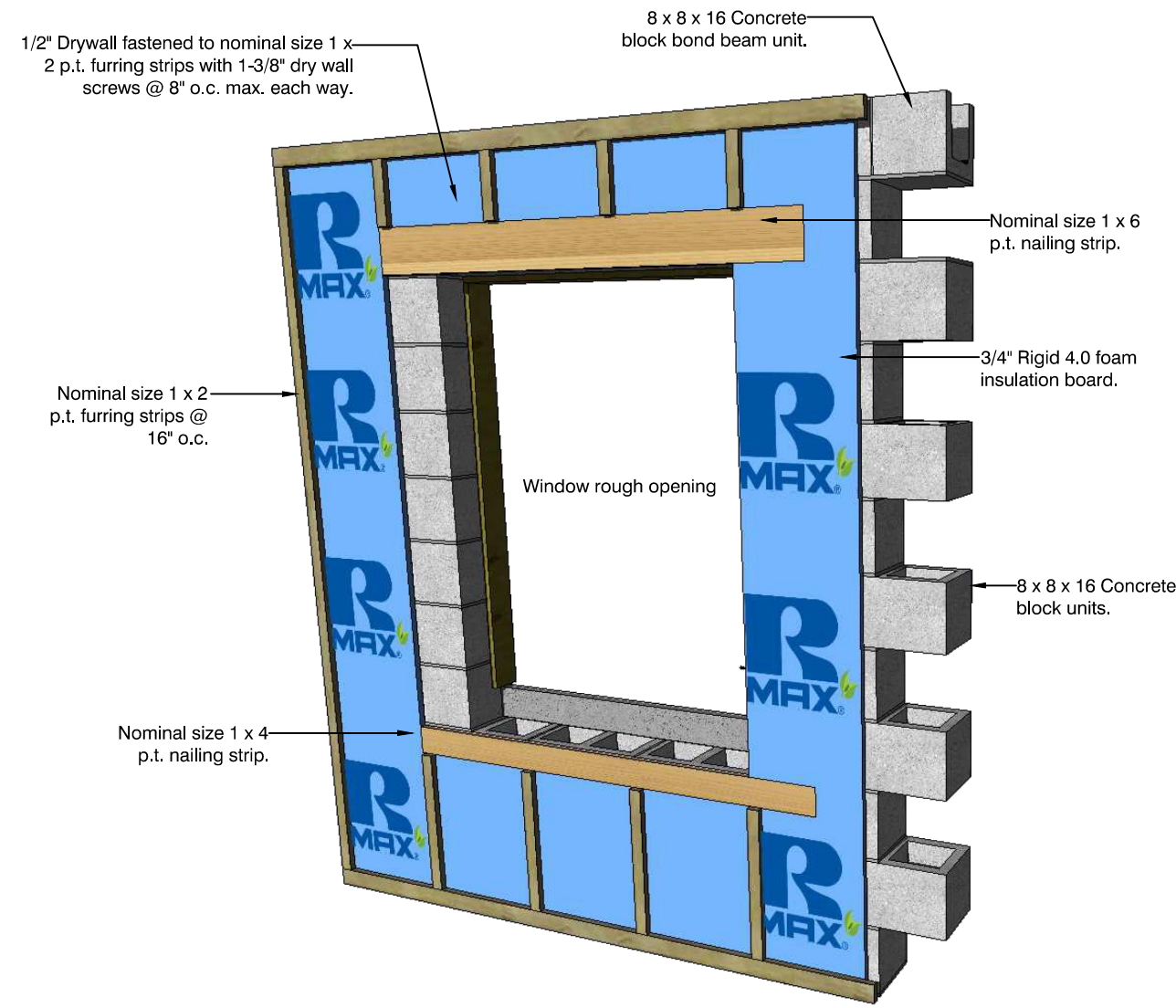


F-1
1-4
Interior bearing wall to concrete block wall detail
SCALE: NOT-TO-SCALE

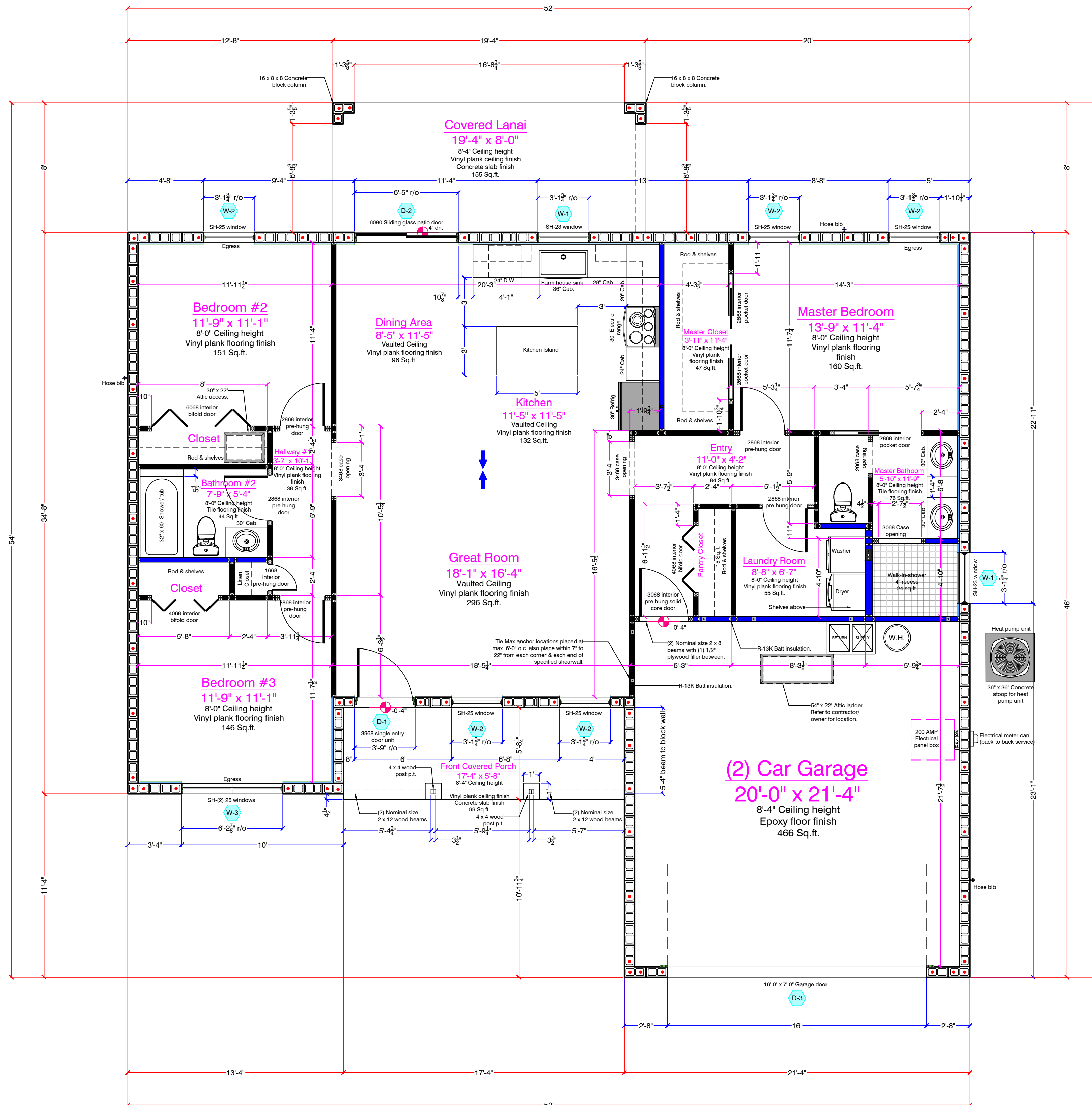


F-2
1-4
Tie-Max rod system detail
SCALE: NOT-TO-SCALE



F-3
1-4
Typical furring and nailing strip layout over concrete block wall detail
SCALE: NOT-TO-SCALE

SQUARE FOOTAGE DATA	
Total living square footage:	1,487 square feet
Front Covered Porch:	99 square feet
(2) Car Garage:	466 square feet
Covered Lanai:	155 square feet
Grand total square footage:	2,207 square feet



Katherine Model

INNOVA LAND & DEVELOPMENT PLANNING LLC

* Openings between the garage and residence shall be equipped with honeycomb core steel or 20 min. rated fire door labeled or solid wood doors not less than 1-3/8\"/>

* The garage shall be separated from the residence and its attic area by not less than 1/2\"/>

* Ducts in the garage and ducts penetrating the walls or ceiling separating the dwelling from the garage shall be constructed of a minimum 26 Ga. sheet steel or other approved material and shall have no openings into the garages. Florida Building Code Residential 2023 8th Edition.

* All casings to be min. 3-1/2\"/>

* Interior dimensions are to the inside face of block wall not furring strips.

Floor plan

SCALE: 1/4" = 1'-0"